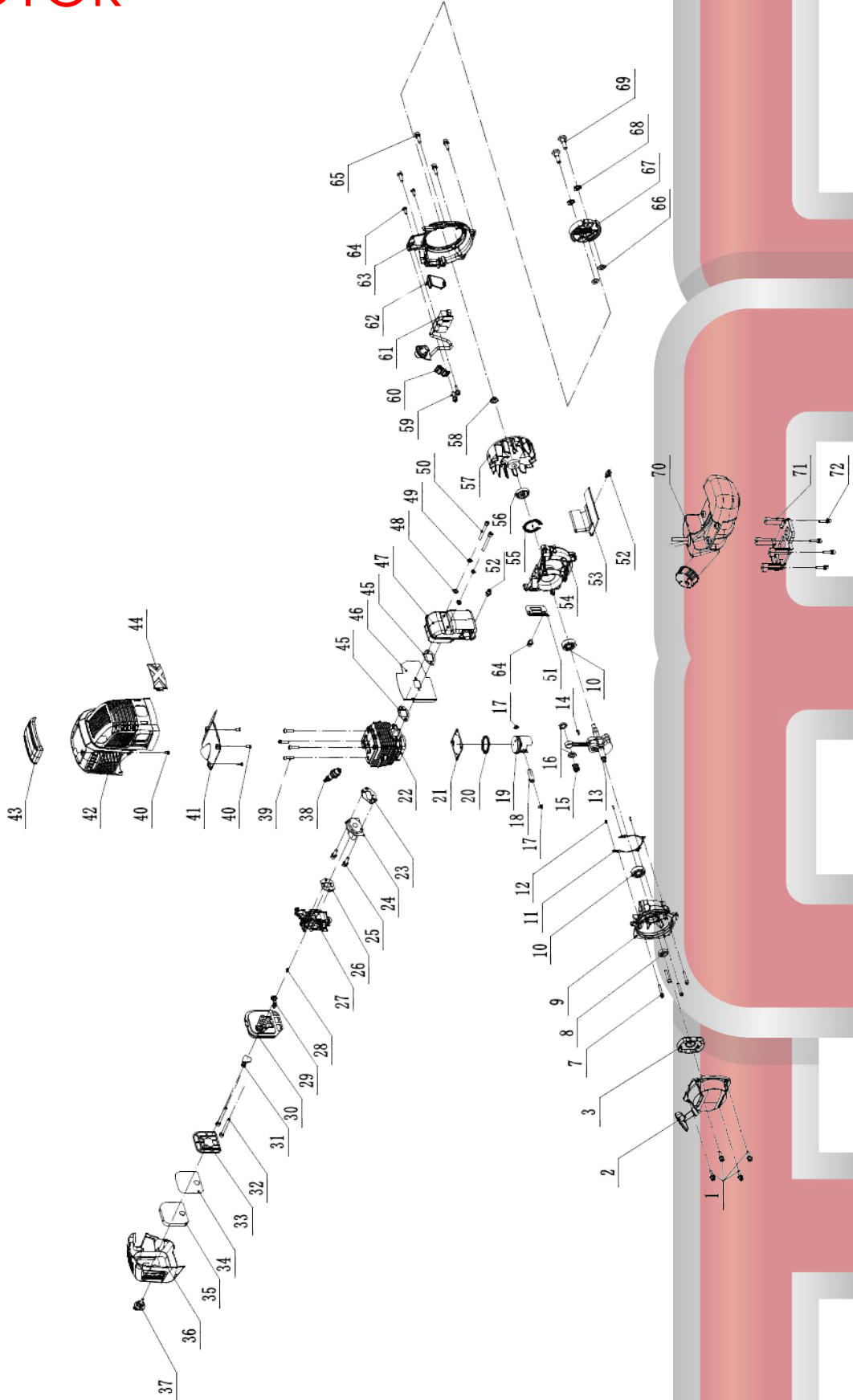
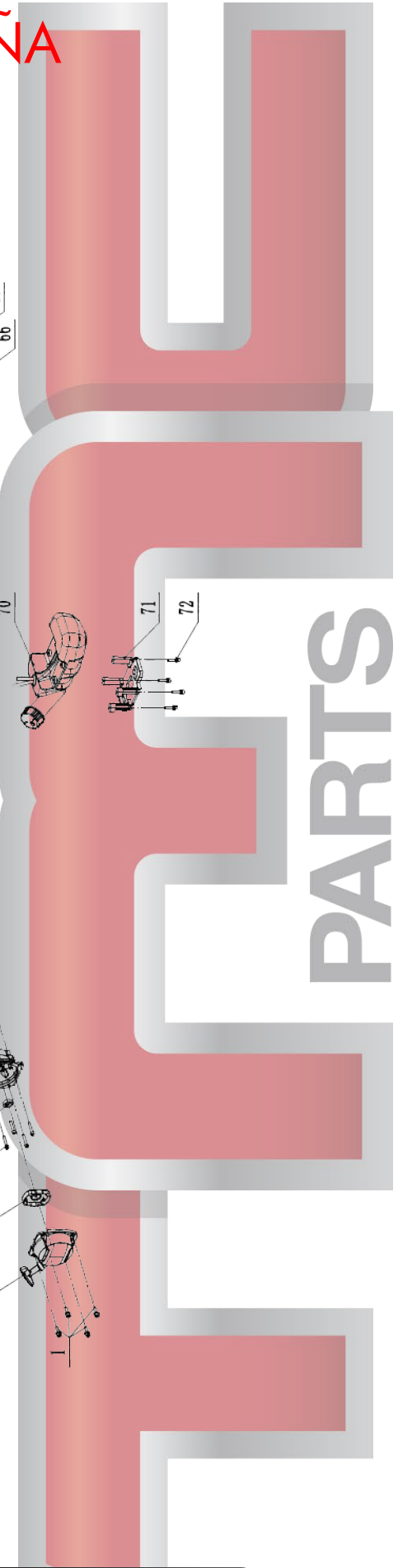


01-02-0741 MOTOGUADAÑA MOTOR



[SOLICITAR AQUI](#)



01-02-0741 MOTOGUADAÑA

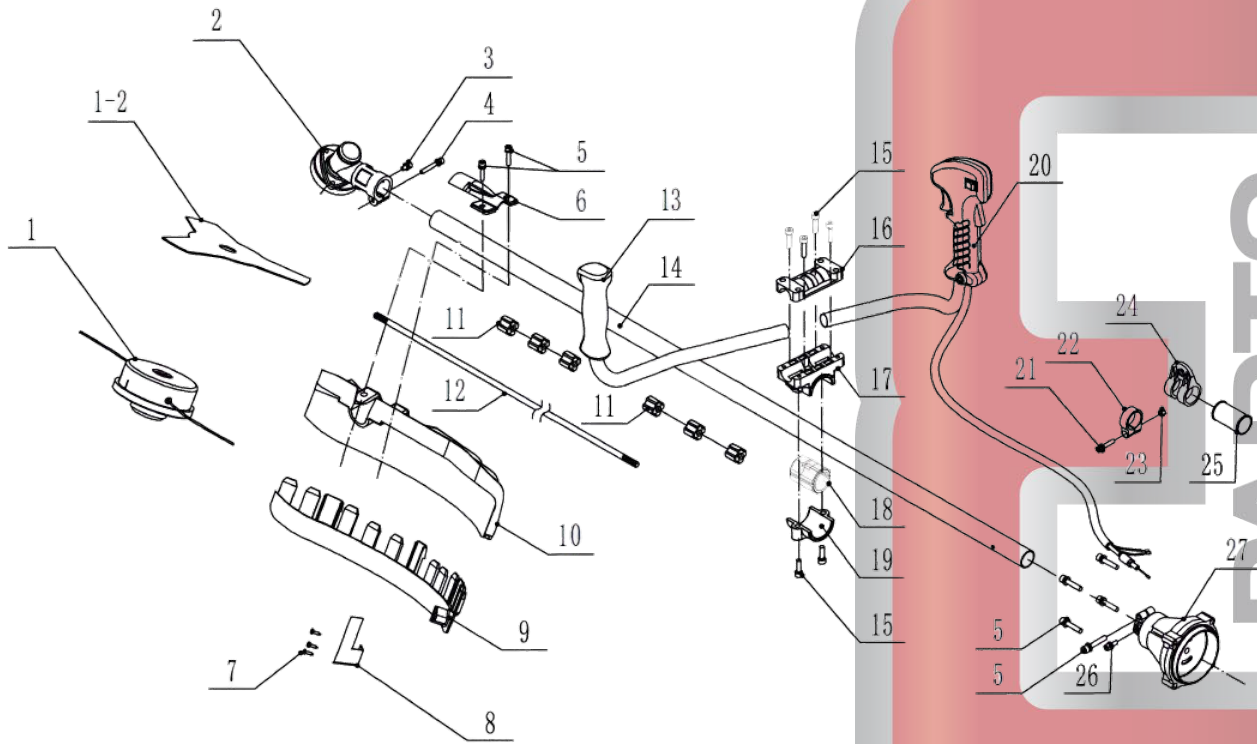
PAGINA 1

MOTOGUADAÑA MG-741 / MOTOR (ENGINE)				
TMC PARTS	01-02-741	DESCRIPCION	Description	CANTIDAD REQUERIDA
No.	Part No.			
A1	0741-1-1	Bulón	Hexagon socket set M6*20	
A2	0741-1-2	Tapa de arranque completa	Starter Assembly	
A3	0741-1-3	Trinquete de ensamblado	easy dial	
A4	0741-1-4	Trinquete	Toggle claw and torsion spring	
A5	0741-1-5	Soporte	startup dial	
A6	0741-1-6	Resorte	Opening Retainer 5	
A7	0741-1-7	Tornillo	Hexagon socket head cap screws M5*30	
A8	0741-1-8	Reten	Oil seal 12*22*7	
A9	0741-1-9	Tapa de carter	Right box	
A10	0741-1-10	Rodamiento	Deep groove ball bearings 6201-95	
A11	0741-1-11	Junta	box gasket	
A12	0741-1-12	Perno	Locating pin 3*8	
A13	0741-1-13	Cigüeñal	crankshaft	
A14	0741-1-14	Chaveta	Semicircular key 3*3.7*10	
A15	0741-1-15	Rodamiento aguja	Needle roller bearing 10*14*11	
A16	0741-1-16	Reten	wear pads	
A17	0741-1-17	Seguro de pistón	Piston pin retaining ring E10	
A18	0741-1-18	Perno de pistón	Piston pin 10*32	
A19	0741-1-19	Pistón	piston	
A20	0741-1-20	Aro de Pistón	piston ring	
A21	0741-1-21	Junta de cilindro	Cylinder paper gasket	
A22	0741-1-22	Cilindro	cylinder	
A23	0741-1-23	Junta	Intake tube paper gasket	
A24	0741-1-24	Garganta de admisión	inlet pipe	
A25	0741-1-25	Tornillo	Hexagon socket head cap screws with flange	
A26	0741-1-26	Junta	Carburetor paper gasket	
A27	0741-1-27	Carburador	carburetor	
A28	0741-1-28	Tornillo	Large flat head tapping screws ST3*8	
A29	0741-1-29	Perilla cebador	Damper Handle	
A30	0741-1-30	Soporte plástico de filtro de aire	Air filter holder	
A31	0741-1-31	Soporte de perilla	damper	
A32	0741-1-32	Tornillo	Hexagon socket set screws M5*55	
A33	0741-1-33	Soporte metálico de filtro	Air filter iron bracket	
A34	0741-1-34	Pre filtro de aire	woolen felt	
A35	0741-1-35	Filtro de aire	Air Filter Sponge	
A36	0741-1-36	Tapa de filtro de aire	air filter cover	
A37	0741-1-37	Tuerca de ajuste filtro	Air Filter Locknut	
A38	0741-1-38	Bujía	Spark Plug BM6A	
A39	0741-1-39	Tornillo	Hexagon socket head cap screws M5*20	
A40	0741-1-40	Tornillo	Pan head tapping screws ST4*8	
A41	0741-1-41	Junta de tapa de cilindro	spoiler	
A42	0741-1-42	Capot	cylinder cover	
A43	0741-1-43	Tapa	Cylinder head cover	
A44	0741-1-44	Etiqueta informativa	Cylinder Cover Label	
A45	0741-1-45	Junta	muffler gasket	
A46	0741-1-46	Asilante de calor	Heat-insulating aluminum plate for muffler	
A47	0741-1-47	Silenciador	muffler	
A48	0741-1-48	Arandela	Flat mat 5*10*1	
A49	0741-1-49	Espaciador	Bullet Cushion M5	
A50	0741-1-50	Tornillo	Hexagon socket head cap screws M5*70	
A51	0741-1-51	Protector	Grass stopper	
A52	0741-1-52	Tornillo	Hexagon socket set screws M5*12	
A53	0741-1-53	Protector de silenciador	Muffler insulation pads	
A54	0741-1-54	Carter	left box	
A55	0741-1-55	Arandela seguer	Inner ferrule 32	
A56	0741-1-56	Rodamiento	Oil seal 12*32*5.5	
A57	0741-1-57	Volante	magnetic flywheel	
A58	0741-1-58	Tuerca	Flange face nut M8*1	
A59	0741-1-59	Tornillo	Hexagon socket head cap screws M4*20	
A60	0741-1-60	Seguro de cable acelerador	Throttle Cable Clip	
A61	0741-1-61	Bobina de encendido	high voltage package	
A62	0741-1-62	Protector	windshield	
A63	0741-1-63	Tapa lateral	side cover	
A64	0741-1-64	Tornillo	Large flat head Phillips slotted screws M5*10	
A65	0741-1-65	Tornillo	Hexagon socket set screws M5*20	
A66	0741-1-66	Aranedela	Flat mat 8*16*1.5	
A67	0741-1-67	Embrague completo	Clutch Assembly	
A68	0741-1-68	Arandela	Wave mat 10*16*0.5	
A69	0741-1-69	Bulón de embrague	Step bolt M8*22	
A70	0741-1-70	Tanque de combustible completo	Riser Oil tank Assembly	
A71	0741-1-71	Protector de tanque	Oil tank Protector	
A72	0741-1-72	Tornillo	Hexagon socket set screws M5*25	

PARTS

SOLICITAR AQUI

01-02-0741 MOTOGUADAÑA



SOLICITAR AQUI

01-02-0741 MOTOGUADAÑA

BARRAL

MOTOGUADAÑA MG-741 / BARRAL (SHAFT)				
TMC PARTS	01-02-741	DESCRIPCION	Description	CANTIDAD REQUERIDA
No.	Part No.			
B1	0741-2-1	Cabezal de corte	Nylon trimmer head	
B1-2	0741-2-1/2	Cuchilla	blade	
B2	0741-2-2	Caja de engranajes completa	Arrowhead gearbox assembly	
B3	0741-2-3	Alemite de lubricación	Hexagon socket set screws M5*14	
B4	0741-2-4	Tornillo	Hexagon socket set screws M5*25	
B5	0741-2-5	Tornillo	Hexagon socket set screws M6*30	
B6	0741-2-6	Placa soporte de protector	Grass stopper platen	
B7	0741-2-7	Tornillo	Pan head tapping screws ST4*12	
B8	0741-2-8	Cuchilla reguladora de nylon	small blade	
B9	0741-2-9	Protector de bordes	Grass guard edge strips	
B10	0741-2-10	Protector de seguridad	grass guard	
B11	0741-2-11	Pasadores lubricadores	Oil-containing bushings	
B12	0741-2-12	Eje cardánico	propshaft	
B13	0741-2-13	Manillar izquierdo	left handle.	
B14	0741-2-14	Barral	aluminium tube	
B15	0741-2-15	Tornillo	Hexagon socket head cap screws M6*25	
B16	0741-2-16	Soporte de manillar (4 agujeros)	Handlebar mount (4 holes)	
B17	0741-2-17	Soporte de manillar (6 agujeros)	Handlebar mount (6 holes)	
B18	0741-2-18	Aislante amortiguador	Handlebar Mount Shock Absorption	
B19	0741-2-19	Soporte de manillar (2 agujeros)	Handlebar mount (2 holes)	
B20	0741-2-20	Manillar derecho completo	Right Handle Assembly	
B21	0741-2-21	Tornillo	Hexagon socket set screws M5*25	
B22	0741-2-22	Soporte	Strap Loop Locking Clip	
B23	0741-2-23	Tuerca	Hexagon nuts M5	
B24	0741-2-24	Anillo de agarre	sling-back strap	
B25	0741-2-25	Aislante amortiguador	Sling Ring Bushings	
B26	0741-2-26	Tornillo	Hexagon socket set screws M5*12	
B27	0741-2-27	Campana de embrague	Output Seat Assembly	

SOLICITAR AQUI